

# CANDLEWOOD LAKE

## UNIT I

110043

**DESCRIPTION**

SITUATED IN the Township of Congress, County of Morrow, and State of Ohio, being a part of Section 5 Township 18, Range 20, containing 16.305 acres in Unit I.

**SURVEYOR'S CERTIFICATION**

I HEREBY CERTIFY that the within plat of Unit I Candlewood Lake was prepared by the office of George W. Raika, Inc., Consulting Engineers and Donald S. Vernilya, Registered Surveyor.

All bearings were computed from a magnetic bearing taken on June 29, 1971 and all distances are in feet and decimals thereof.

*Donald S. Vernilya*  
Registered Surveyor No. 9695

**DECLARATION AND DEDICATION**

We do hereby certify that we are the owners of the land shown on the above plat and we do certify that we have caused the survey and subdivision thereof to be made as shown on the above plat and to be known as "Candlewood Lake Subdivision" UNIT I lots 1-200 and A-I inclusive in the Township of Congress, Morrow County, Ohio, and acknowledge said survey to be correct to the best of our knowledge and belief, and we hereby dedicate those State, County and Township Roads labeled on the map. The streets within the plat labeled "private street" are hereby reserved for the use of all public utility companies.

**OWNER'S ACKNOWLEDGMENT**

BE IT REMEMBERED that Whetstone Development, Inc., a Delaware Corporation owner of the lands shown on the attached plat, do hereby acknowledge the making of said plat to be its voluntary act and deed.

**Witnesses**

Whetstone Development, Inc.

By *Fred L. Grider*  
VICE - PRESIDENT

By *Robert E. Augustine*  
ASST. SECY

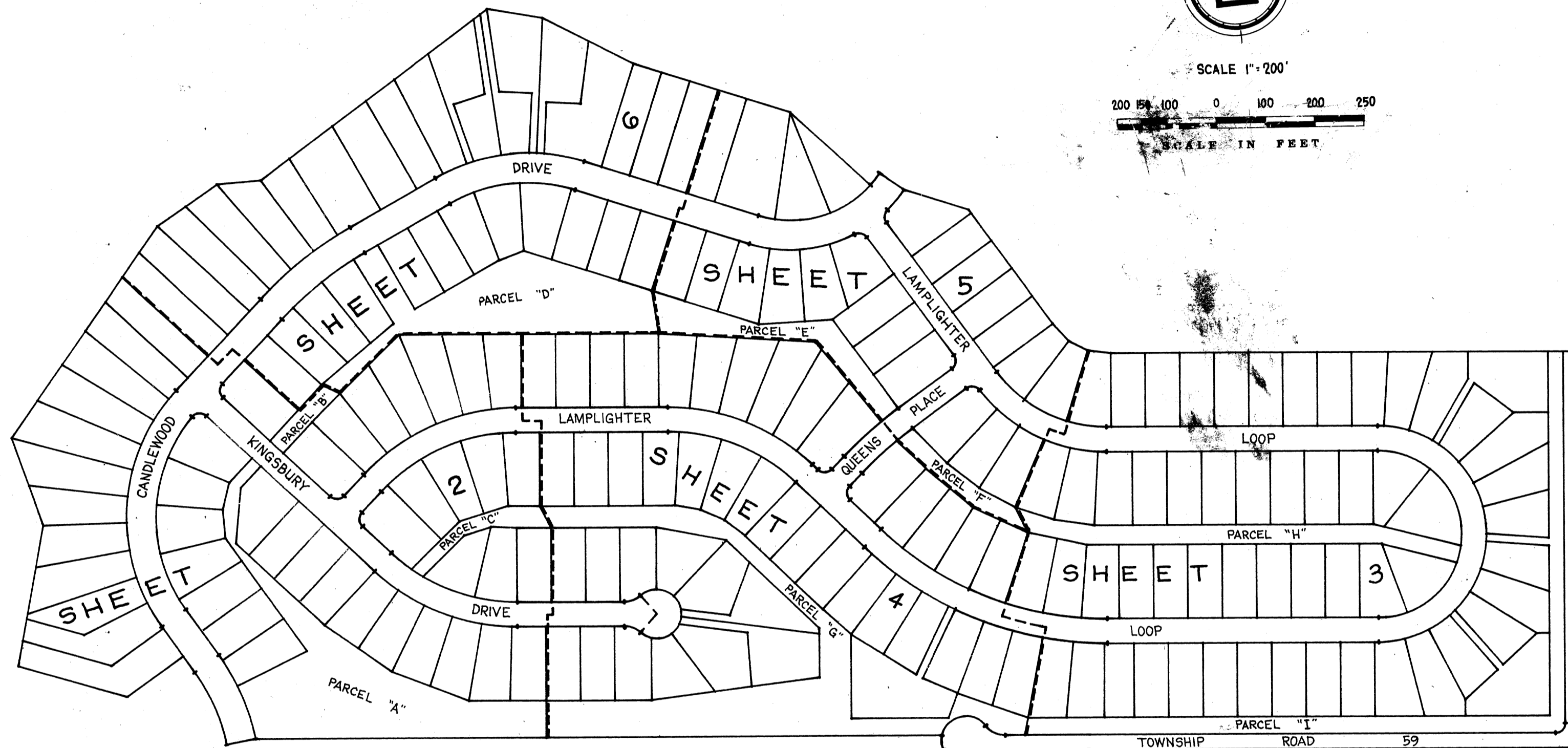
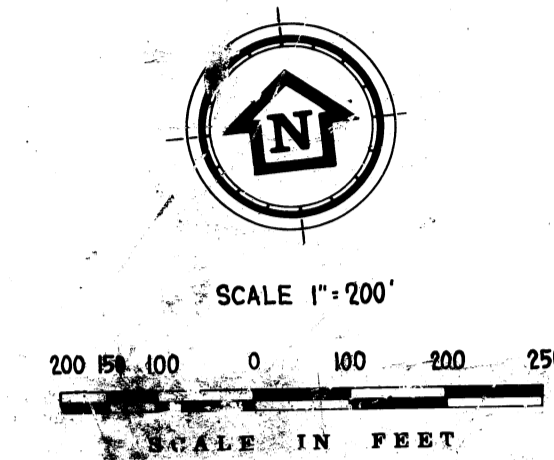
STATE OF OHIO  
COUNTY OF MORROW SS

Before me, a notary public, in and for said county, personally appeared FRED L. GRIDER VICE PRESIDENT and ROBERT E. AUGUSTINE ASST. SECY of Whetstone Development, Inc., the corporation which executed the foregoing Owner's Acknowledgment, who acknowledged that the seal affixed to said instrument is the corporate seal of said corporation; that they did sign and seal said instrument as such Vice Pres. and Asst. Secy. in behalf of said corporation and by authority of its board of directors; and that said instrument is their free act and deed individually and as such Vice Pres. and Asst. Secy. and the free and corporate act and deed of said Whetstone Development, Inc.

IN TESTIMONY WHEREOF I have hereunto subscribed my name and affixed my official seal at MT. CLEVELAND, OHIO, this 31ST day of MARCH, 1972.

*Stephen W. Hynes*  
Notary Public

My Commission Expires April 9, 1975



ALL PROPERTY CORNERS  
MARKED BY IRON PINS  
CONCRETE MONUMENT

**PRESENTED TO MORROW COUNTY COMMISSIONERS**

THE WITHIN PLAT was presented to the Board of Morrow County Commissioners for their approval on April 4 1972

*Robert Rhodebeck*  
*John Schach*  
*J. F. Bolinger*  
*Elaine Keime*  
Clerk

**APPROVAL OF MORROW COUNTY COMMISSIONERS**

I HEREBY CERTIFY that this plat was approved by the Morrow County Commissioners at a Regular meeting held April 4, 1972.

*Robert Rhodebeck*  
*John Schach*  
*J. F. Bolinger*  
*Elaine Keime*  
Clerk

**APPROVAL OF MORROW COUNTY BOARD OF HEALTH**

I HEREBY CERTIFY that this plat was approved by the Morrow County Board of Health at a regular meeting held April 4, 1972.

*William Schach*  
Sanitarian

**APPROVAL OF MORROW COUNTY REGIONAL PLANNING COMMISSION**

I HEREBY CERTIFY that the within plat was approved by the Morrow County Regional Planning Commission at a Regular meeting held MARCH 30, 1972.

*William Schach*  
Secretary  
*Marvin Hoch*  
President

**APPROVAL OF MORROW COUNTY ENGINEER**

I HEREBY APPROVE the within plat of Candlewood Lake, Congress Township, Morrow County, Ohio, this fourth day of Apr., 1972.

*Justin Carley*  
Morrow County Engineer

**AUDITOR'S CERTIFICATION**

I HEREBY CERTIFY that there are no delinquent or unpaid taxes of record upon the above described property as of the date of transfer.

TRANSFERRED April 4, 1972.

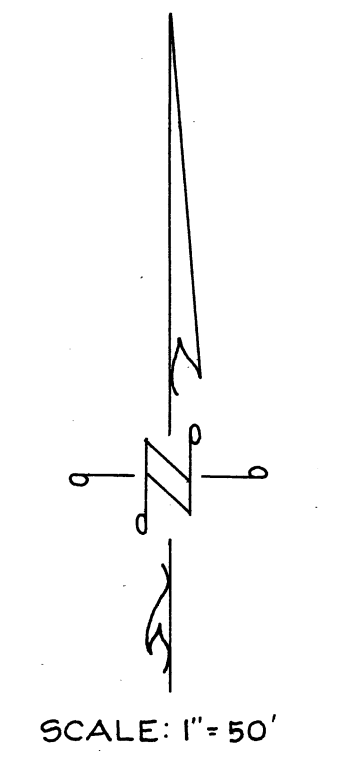
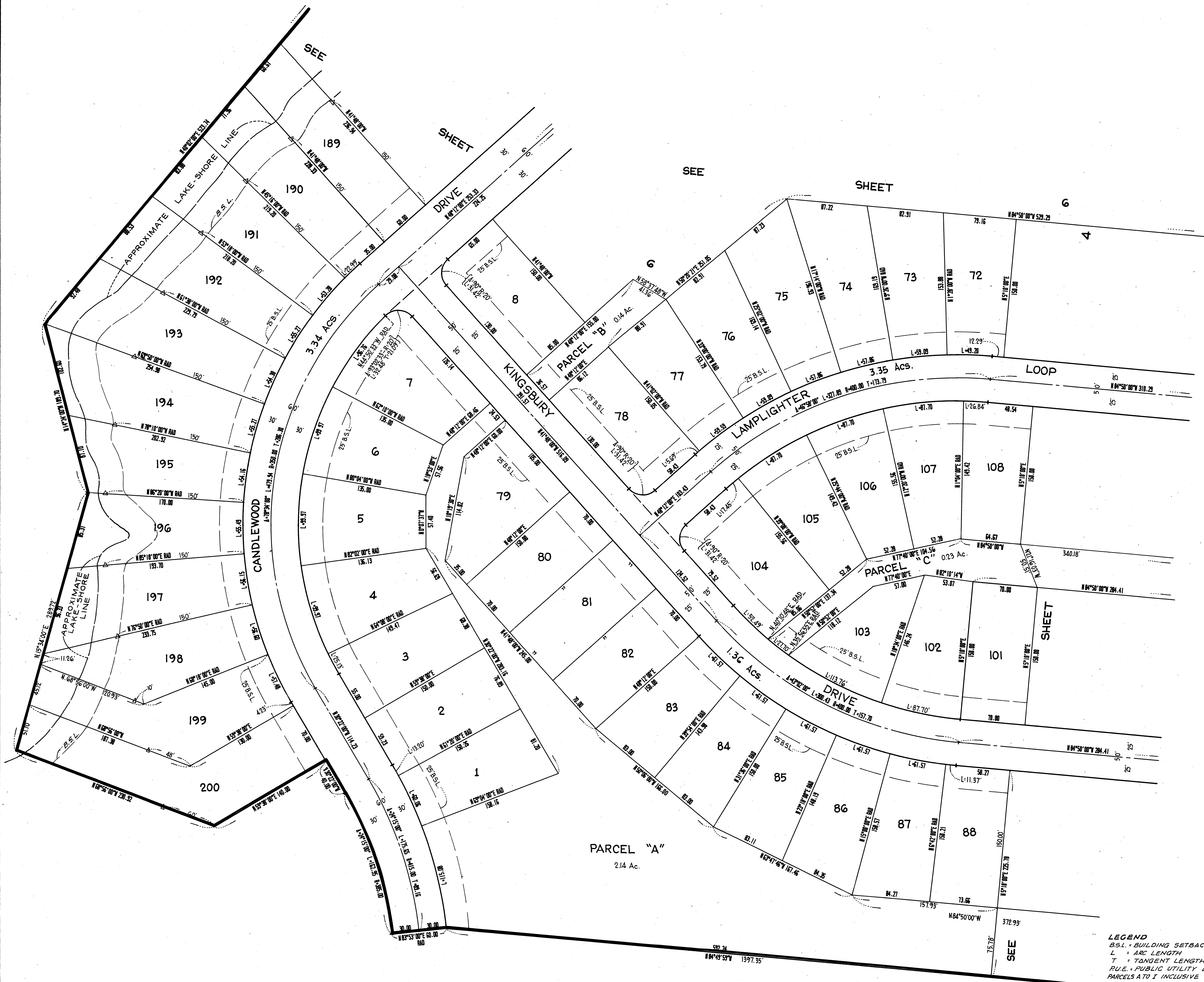
*Merrill Corzwell*  
Morrow County Auditor

**RECORDER'S CERTIFICATION**

HEREBY CERTIFY that the within plat was filed April 7, 1972 O'clock 12:10, 1972, in Candlewood Lake Plat Book, Pages 1 to 6 Inclusive of the Morrow County Records.

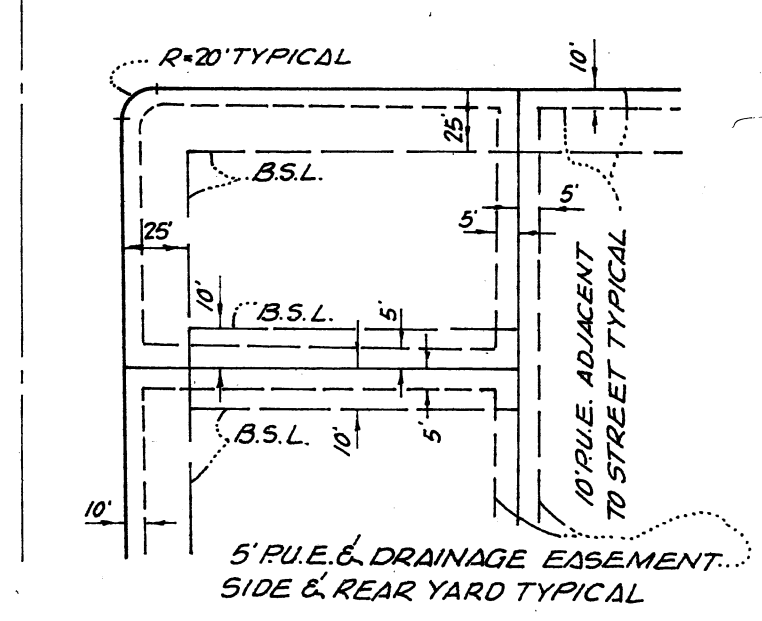
FEE 42.00

*Dorothy Thompson*  
Morrow County Recorder



**NOTE:**  
 1. REAR LOT PINS WERE NOT SET AT THE REAR OF LOTS INCLUSIVE.  
 2. WITNESS POINTS WERE SET AS SHOWN & 150' FROM THE FRONT LOT CORNER, EXCEPT WHERE NOTED.  
 3. THE LAKE LINE SHOWN IS FOR A NORMAL WATER SURFACE AT ELEVATION 1205 BASED UPON APRIL 1971 TOPOGRAPHY COMPILED BY HENDERSON AERIAL SURVEYS OF OHIO.

PRIVATE STREETS EXCEPT WHERE NOTED



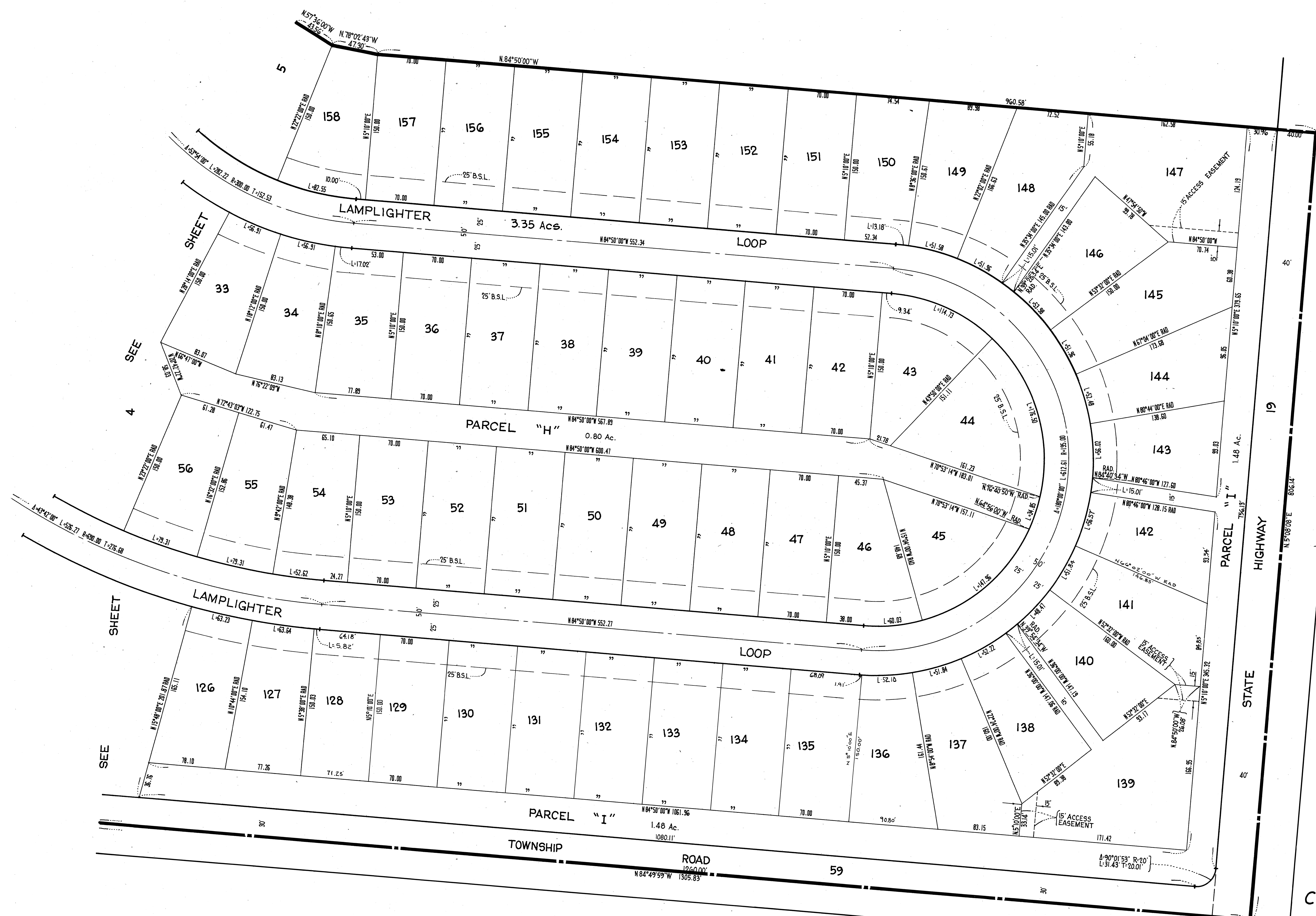
THE STREETS WITHIN THE SUBDIVISION ARE RESERVED FOR THE USE OF ALL PUBLIC UTILITY COMPANIES.

TYPICAL FRONT AND SIDEYARD SETBACK AND P.U.E. DETAIL (NO SCALE)

**CANDLEWOOD LAKE UNIT No 1**

BEING A SUBDIVISION OF PORTIONS OF SECTION 5 TOWNSHIP 18 RANGE 20 CONGRESS TOWNSHIP IN THE COUNTY OF MORROW, STATE OF OHIO.

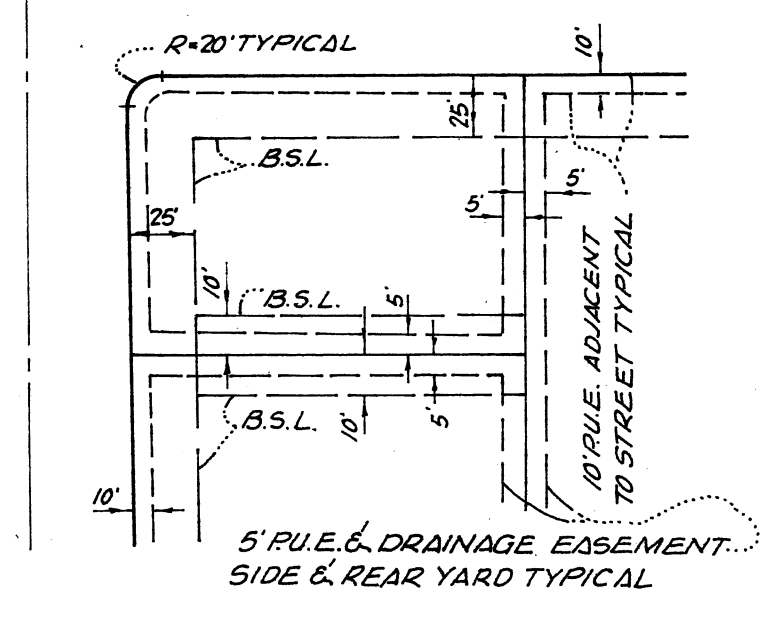
**LEGEND**  
 B.S.L. - BUILDING SETBACK LINE.  
 L - ARC LENGTH  
 T - TANGENT LENGTH  
 P.U.E. - PUBLIC UTILITY EASEMENT  
 PARCELS A TO I INCLUSIVE ARE SUBJECT TO DRAINAGE EASEMENTS IN THEIR ENTIRETY.



B.S.L. = BUILDING SETBACK LINE.  
 L = ARC LENGTH  
 T = TANGENT LENGTH  
 P.U.E. = PUBLIC UTILITY EASEMENT.  
 PARCEL A TO I INCLUSIVE ARE SUBJECT TO DRAINAGE EASEMENTS IN THEIR ENTIRETY.

NOTE:  
 1. REAR LOT PINS WERE NOT SET AT THE REAR OF LOTS INCLUSIVE.  
 2. WITNESS POINTS WERE SET AS SHOWN & 150' FROM THE FRONT LOT CORNER, EXCEPT WHERE NOTED.  
 3. THE LAKE LINE SHOWN IS FOR A NORMAL WATER SURFACE AT ELEVATION 1205 BASED UPON APRIL 1971 TOPOGRAPHY COMPILED BY HENDERSON AERIAL SURVEYS OF OHIO.

PRIVATE STREETS EXCEPT WHERE NOTED

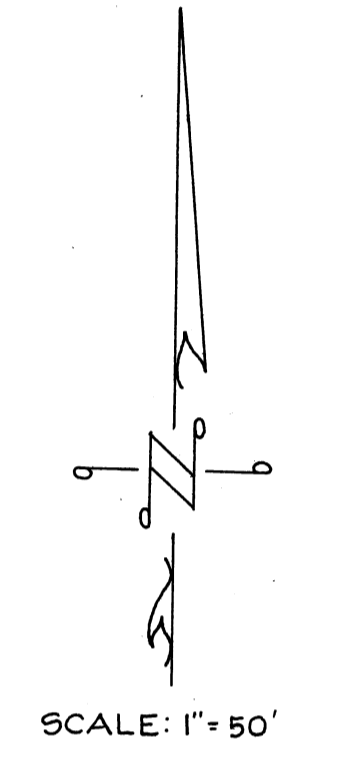
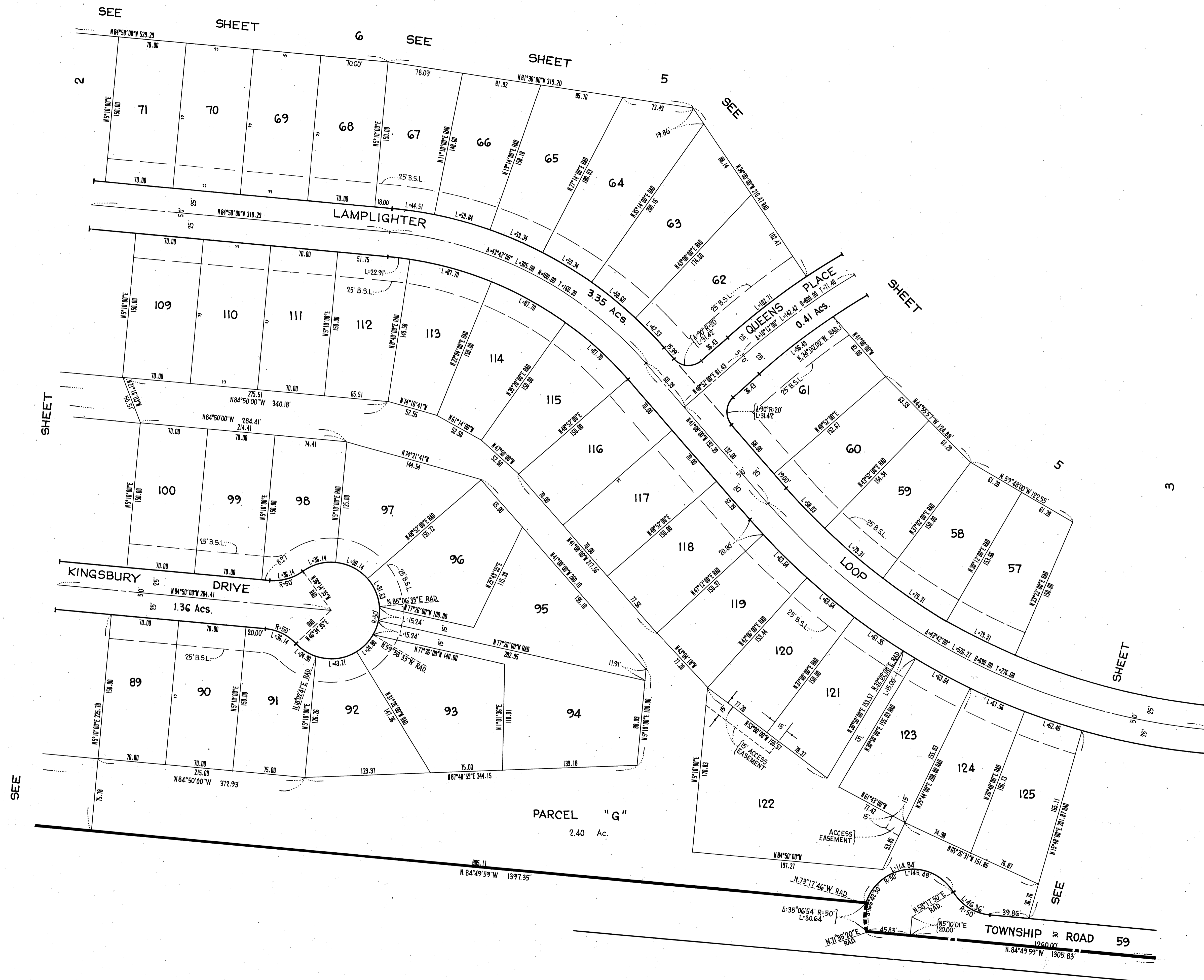


THE STREETS WITHIN THE SUBDIVISION ARE RESERVED FOR THE USE OF ALL PUBLIC UTILITY COMPANIES.

TYPICAL FRONT AND SIDEYARD SETBACK AND P.U.E. DETAIL (NO SCALE)

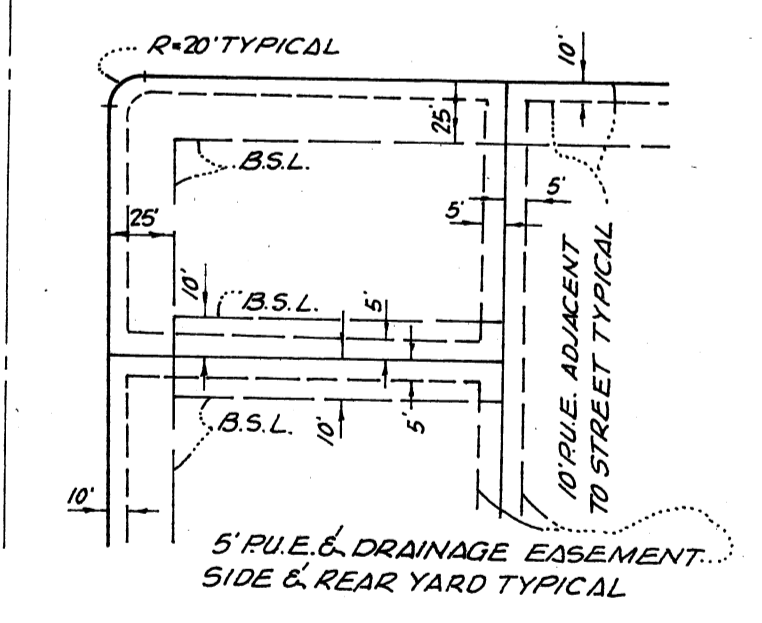
**CANDLEWOOD LAKE UNIT No 1**

BEING A SUBDIVISION OF PORTIONS OF SECTION 5 TOWNSHIP 18 RANGE 20 CONGRESS TOWNSHIP IN THE COUNTY OF MORROW, STATE OF OHIO.



**NOTE:**  
 1. REAR LOT PINS WERE NOT SET AT THE REAR OF LOTS INCLUSIVE.  
 2. WITNESS POINTS WERE SET AS SHOWN & 150' FROM THE FRONT LOT CORNER, EXCEPT WHERE NOTED.  
 3. THE LAKE LINE SHOWN IS FOR A NORMAL WATER SURFACE AT ELEVATION 1205 BASED UPON APRIL 1971 TOPOGRAPHY COMPILED BY HENDERSON AERIAL SURVEYS OF OHIO.

PRIVATE STREETS EXCEPT WHERE NOTED.



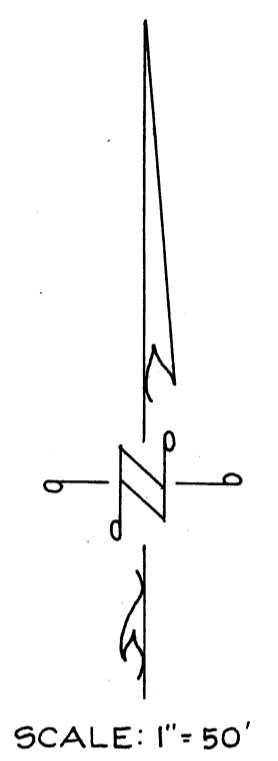
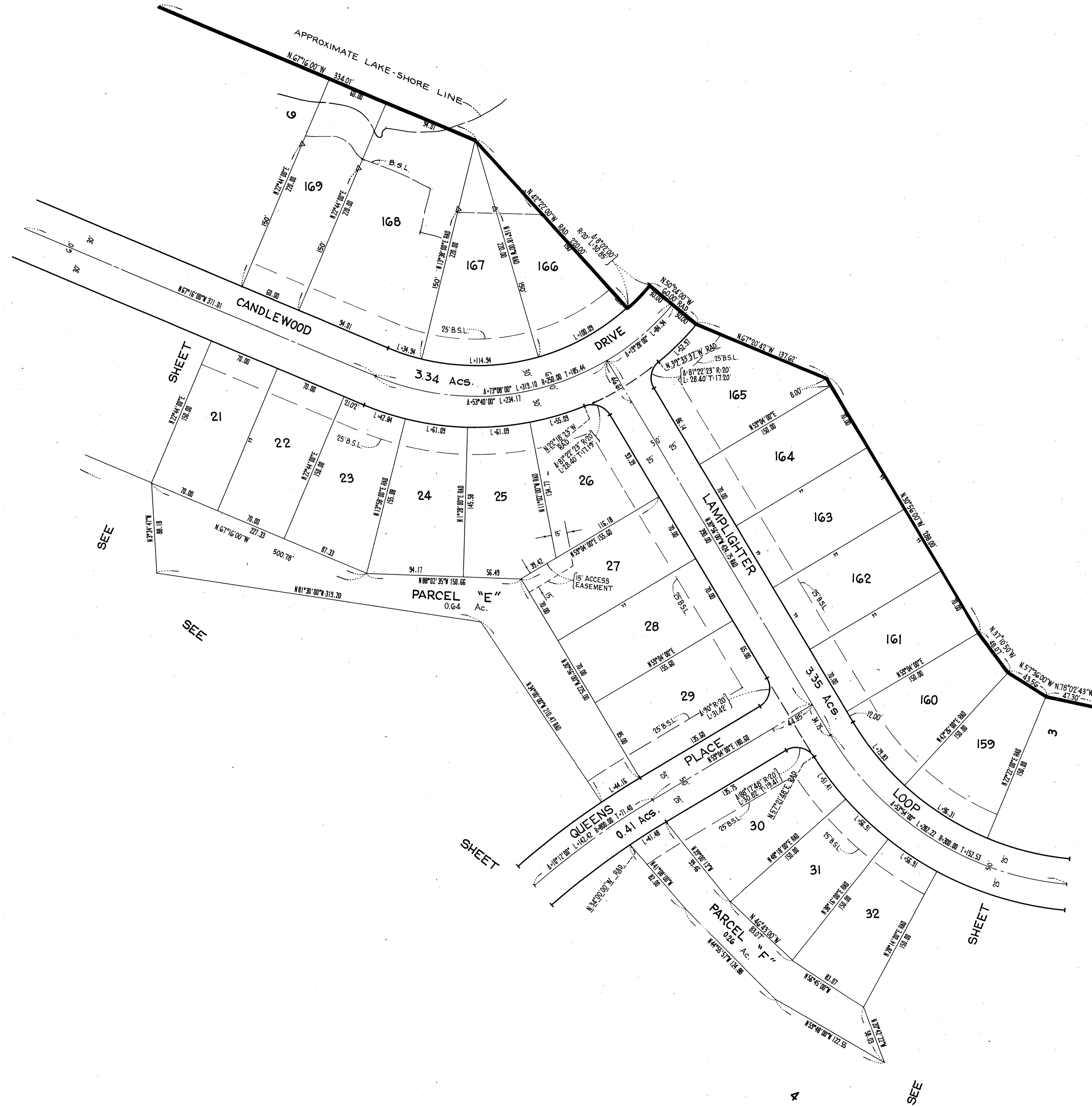
THE STREETS WITHIN THE SUBDIVISION ARE RESERVED FOR THE USE OF ALL PUBLIC UTILITY COMPANIES.

TYPICAL FRONT AND SIDEYARD SETBACK AND P.U.E. DETAIL (NO SCALE)

**CANDLEWOOD LAKE UNIT No 1**

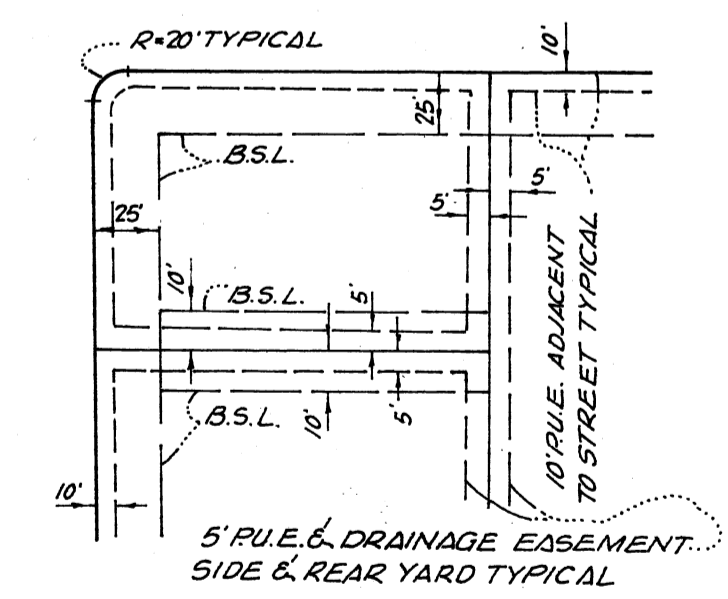
**LEGEND**  
 B.S.L. = BUILDING SETBACK LINE.  
 L = ARC LENGTH  
 T = TANGENT LENGTH  
 P.U.E. = PUBLIC UTILITY EASEMENT.  
 PARCELS A TO I INCLUSIVE ARE SUBJECT TO DRAINAGE EASEMENTS IN THEIR ENTIRETY.

BEING A SUBDIVISION OF PORTIONS OF SECTION 5 TOWNSHIP 18 RANGE 20 CONGRESS TOWNSHIP IN THE COUNTY OF MORROW, STATE OF OHIO.



**NOTE:**  
 1. REAR LOT PINS WERE NOT SET AT THE REAR OF LOTS INCLUSIVE.  
 2. WITNESS POINTS WERE SET AS SHOWN & 150' FROM THE FRONT LOT CORNER, EXCEPT WHERE NOTED.  
 3. THE LAKE LINE SHOWN IS FOR A NORMAL WATER SURFACE AT ELEVATION 1205 BASED UPON APRIL 1971 TOPOGRAPHY COMPILED BY HENDERSON AERIAL SURVEYS OF OHIO.

PRIVATE STREETS EXCEPT WHERE NOTED



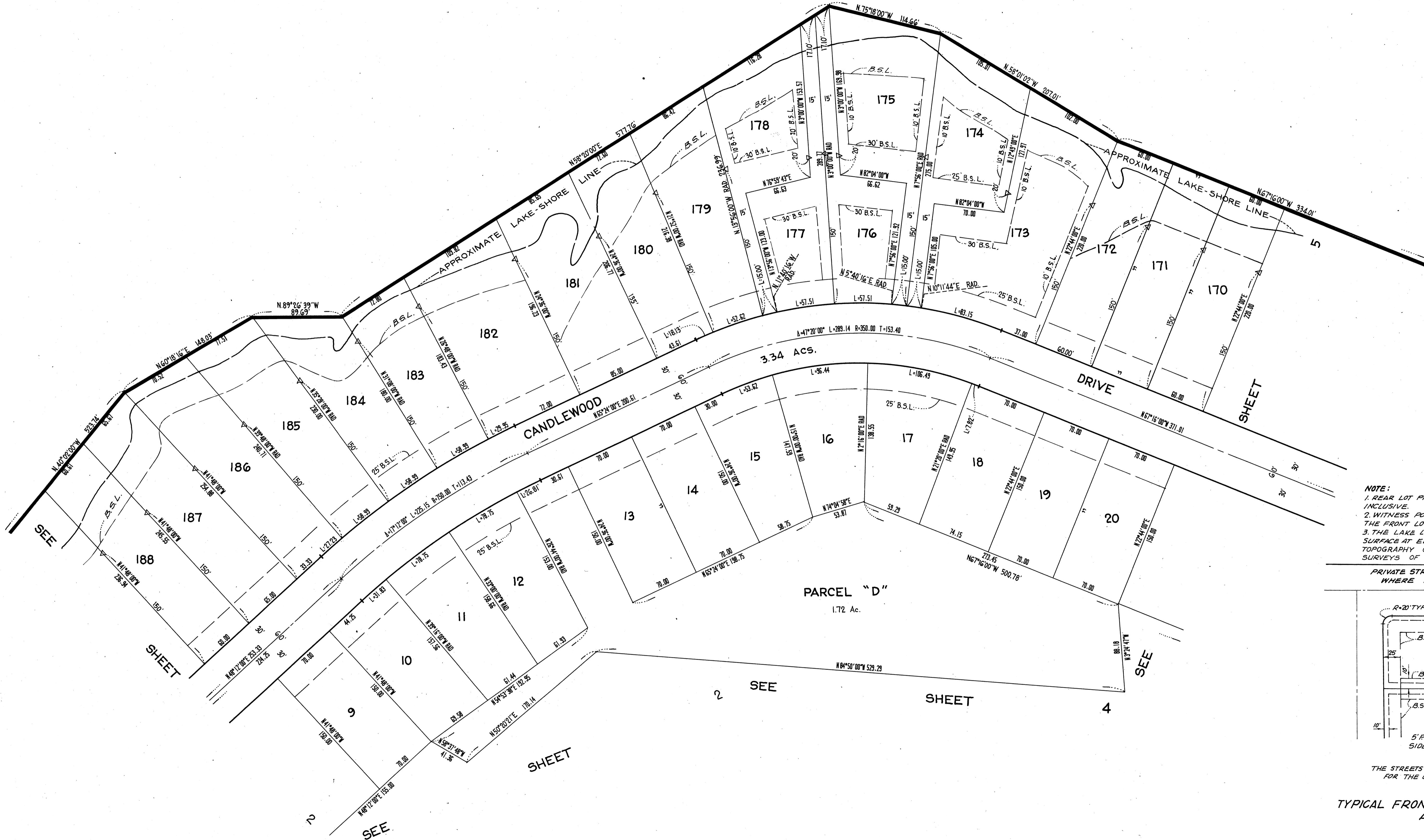
THE STREETS WITHIN THE SUBDIVISION ARE RESERVED FOR THE USE OF ALL PUBLIC UTILITY COMPANIES.

TYPICAL FRONT AND SIDEYARD SETBACK AND P.U.E. DETAIL (NO SCALE)

**CANDLEWOOD LAKE UNIT No 1**

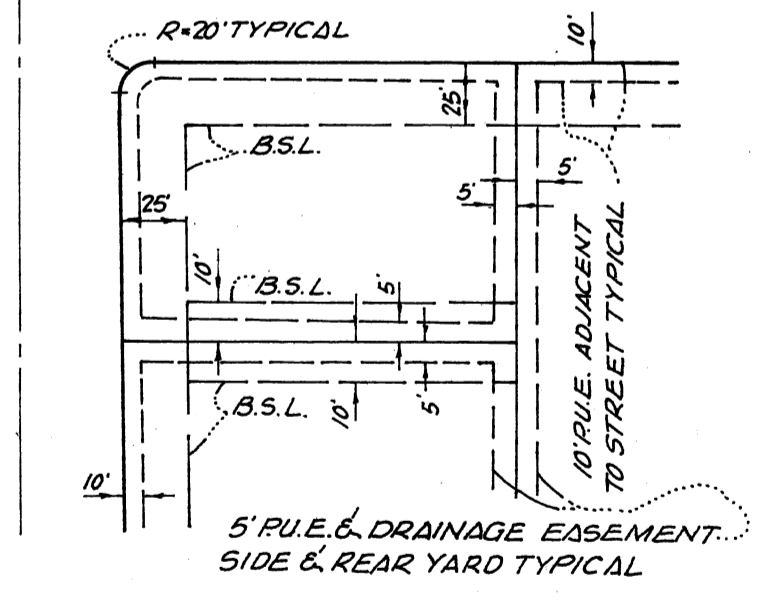
**LEGEND**  
 B.S.L. - BUILDING SETBACK LINE.  
 L - ARC LENGTH  
 T - TANGENT LENGTH  
 P.U.E. - PUBLIC UTILITY EASEMENT  
 PARCELS A TO I INCLUSIVE ARE SUBJECT TO DRAINAGE EASEMENTS IN THEIR ENTIRETY.

BEING A SUBDIVISION OF PORTIONS OF SECTION 5 TOWNSHIP 18 RANGE 20 CONGRESS TOWNSHIP IN THE COUNTY OF MORROW, STATE OF OHIO.



**NOTE:**  
 1. REAR LOT PINS WERE NOT SET AT THE REAR OF LOTS INCLUSIVE.  
 2. WITNESS POINTS WERE SET AS SHOWN & 150' FROM THE FRONT LOT CORNER, EXCEPT WHERE NOTED.  
 3. THE LAKE LINE SHOWN IS FOR A NORMAL WATER SURFACE AT ELEVATION 1205 BASED UPON APRIL 1971 TOPOGRAPHY COMPILED BY HENDERSON AERIAL SURVEYS OF OHIO.

PRIVATE STREETS EXCEPT WHERE NOTED



THE STREETS WITHIN THE SUBDIVISION ARE RESERVED FOR THE USE OF ALL PUBLIC UTILITY COMPANIES.

TYPICAL FRONT AND SIDEYARD SETBACK AND P.U.E. DETAIL  
 (NO SCALE)

**CANDLEWOOD LAKE UNIT No 1**

**LEGEND**  
 B.S.L. = BUILDING SETBACK LINE.  
 L = ARC LENGTH  
 T = TANGENT LENGTH  
 P.U.E. = PUBLIC UTILITY EASEMENT.  
 PARCELS A TO I INCLUSIVE ARE SUBJECT TO DRAINAGE EASEMENTS IN THEIR ENTIRETY

BEING A SUBDIVISION OF PORTIONS OF SECTION 5 TOWNSHIP 18 RANGE 20 CONGRESS TOWNSHIP IN THE COUNTY OF MORROW, STATE OF OHIO.